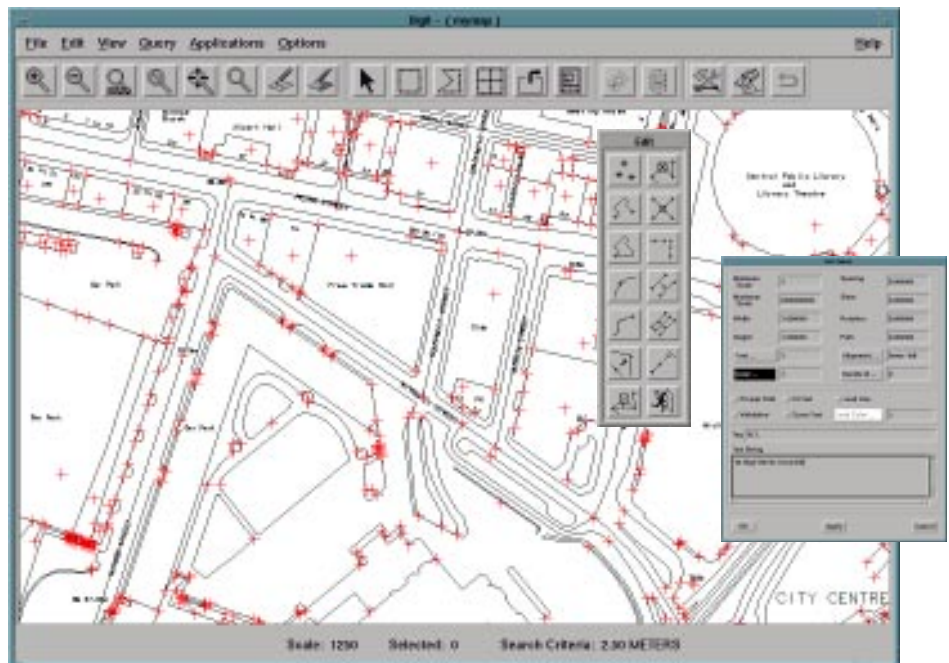


Digit

Map editing and digitising

Map data maintenance made easy

Digit is a Genius II point-and-click, graphical user interface for digitising, editing, reformatting, topologically structuring and verifying map data.



Many users of spatial data spend much of their time editing and manipulating data and maps, and GenaMap provides many powerful commands for editing, digitising, topologically structuring and data reformatting. Now Genasys has developed a way to provide this map maintenance functionality through a simple, point-and-click interface called Digit.

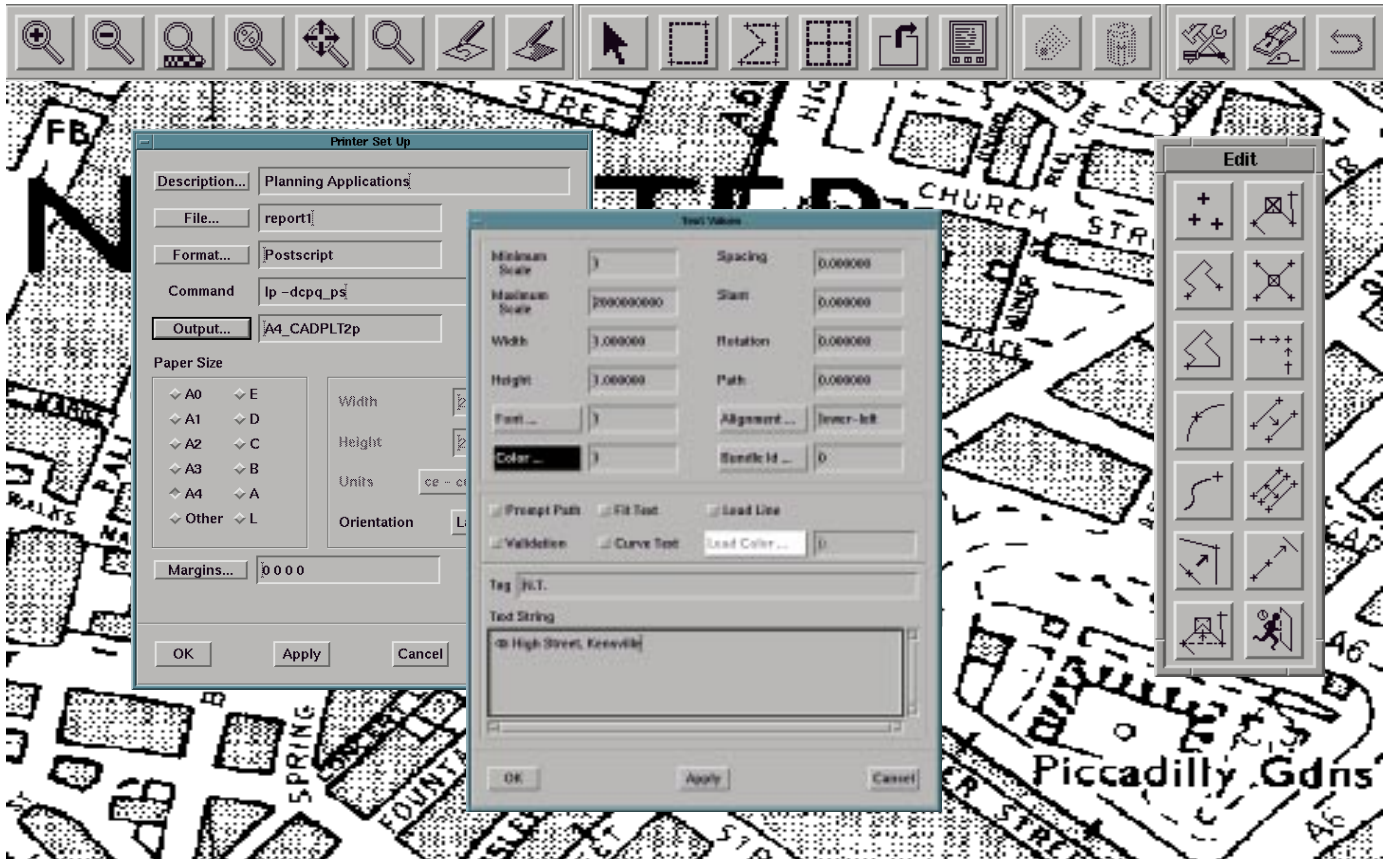
Digit is an enabling tool to give you more productive data entry, update and management. Digit's interactive Graphical User Interface (GUI) is based on Genasys' powerful Genius II GUI builder. Digit utilises simple point-and-click operations for even complex edit operations. Multi-step commands and processes for data management are gone - Digit does it all!

Digit offers a variety of tools including feature snap, pan and zoom, edge and vertex creation and editing, and heads-up digitising with raster backdrops to streamline the digitizing and edit process.

Digit offers a comprehensive set of functions for the GenaMap user including file and map management, coordinate geometry (COGO), CAD functionality, attribute tagging, and creation of checkplots. Digit also reduces the elaborate process of rubber sheeting down to just a few simple clicks of the mouse.

PRODUCT
Series

Advanced data editing and digitising tools for GenaMap



- Easy-to-use graphical interface provides easy access to spatial database management functions.
- Data import capabilities are from DXF, and to/from DGN and ARC/INFO, along with topological structuring to identify, fix and verify data errors or "spaghetti."
- Simple point-and-click operations make common digitizing functions simple, such as edge and node creation, node and edge snap, and vertex editing.
- Tagging functionality includes the ability to tag points, lines and polygons; set symbology for points, lines and polygons; edit and delete tags; and tag locations based on coordinates.
- Delete functions are easily implemented for polygons, edges, nodes and vertex. Digit features the ability to clip lines which cross polygons, and to delete data from within a polygon.
- A variety of often used editing functions are simplified in Digit, including add/move vertex, reverse directionality, square and spline, thin lines, and join and move nodes.
- Geometry functions include parallel copy, fillet curves, cul-de-sacs, line explode/extend/intersect, and graphics buffer (clipboard) functions copy, rotate, scale and move.
- COGO functions are performed by keyboard entry of point or line data using x/y coordinates, bearings and distances, or distance-distance offsets. Also supported are line inverse calculations and automatic angle correction.

© Crown Copyright

For more information on Genasys and its products and services, go our web site at:

www.genasys.com