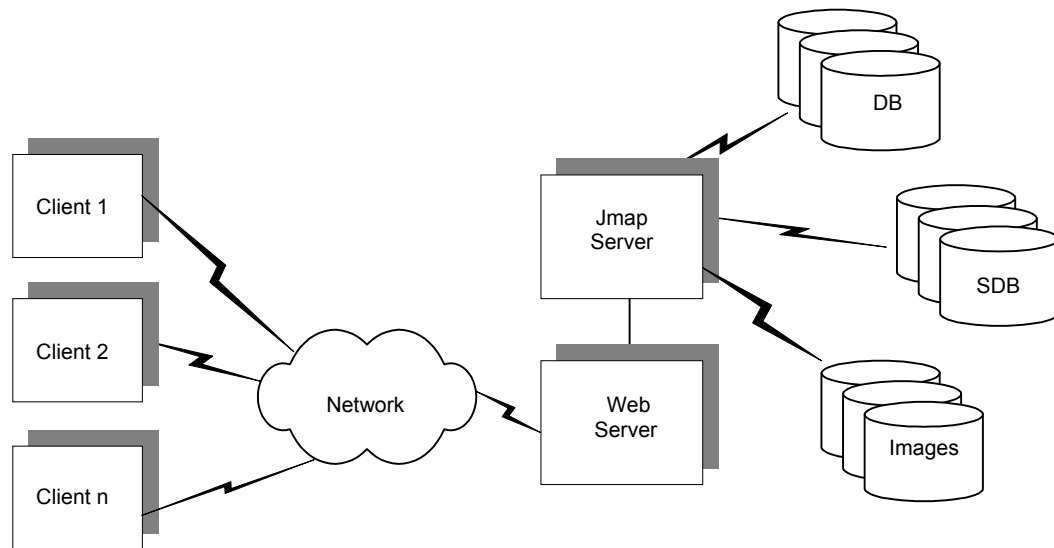


JMap Version 1

Interactive Client-Side Technology

Applications developed with JMap technology allow vector and raster data to be manipulated and queried at client workstations. JMap uses efficient data-transfer protocols so that the geometric information required for generating new maps can be stored in memory. JMap's software components and transfer protocols therefore result in a more evenly balanced workload for data servers and clients. Its numerous benefits include:

- High degree of user interaction;
- Very fast display;
- Reduced load on communication networks;
- Integration with existing software and hardware.
- ...



Open Technology

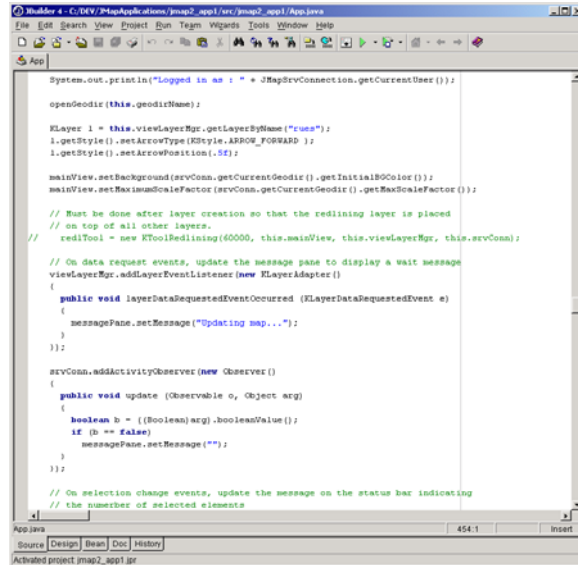
With JMap, organizational data can be used in its original format; conversions are unnecessary. In fact, JMap can extract geographical data from several commercial formats used in the industry (shapes, mid/mif, dxf, dgn, etc.). In addition, JMap is compatible with most relational database management systems available in today's market.

Moreover, JMap is entirely written in Java and is therefore cross-platform usable. JMap can therefore be installed and deployed on an organization's existing or planned operating system, whether Windows NT/2000, Solaris or Linux.

Its independence from GIS and DBMS as well as from hardware and operating system makes a JMap environment more flexible in terms of system integration and stability.

Flexible Evolutionary Technology

JMap's application programming interface (API) can be used to adapt applications and graphical interfaces to the user. Moreover, thanks to its rich object oriented class set (350 classes and interfaces), JMap gives programmers the possibility of developing and integrating new and complementary functions and tools for either the client or server side. The JMap API and Java programming result in shorter development time and therefore cost savings.



```
System.out.println("Logged in as : " + JMapSvcConnection.getCurrentUser());

openGeodir(this.geodirName);

KLayer l = this.viewLayerMgr.getLayerByName("rues");
l.getStyle().setArrowType(KStyle.ARROW_FORWARD);
l.getStyle().setArrowPosition(5f);

mainView.setBackground(srvConn.getCurrentGeodir().getInitialBGColor());
mainView.setMaxZoomScaleFactor(srvConn.getCurrentGeodir().getMaxScaleFactor());

// Must be done after layer creation so that the redlining layer is placed
// on top of all other layers.
redlTool = new KToolRedlining(60000, this.mainView, this.viewLayerMgr, this.srvConn);

// On data request events, update the message pane to display a wait message
viewLayerMgr.addListener(new KLayerAdapter() {
    public void layerDataRequestedEventOccured (KLayerDataRequestedEvent e) {
        messagePane.setMessage("Updating map...");
    }
});

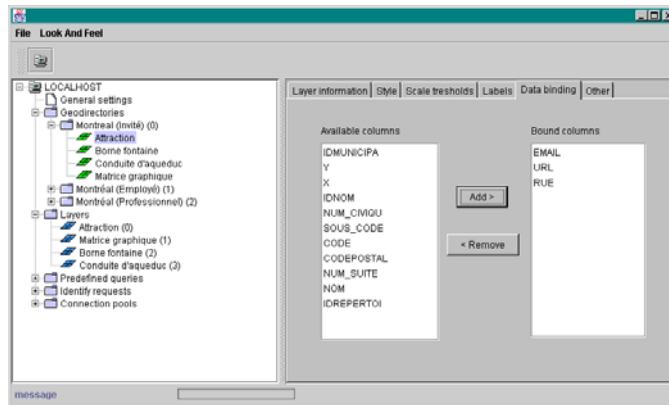
srvConn.addActivityObserver(new Observer() {
    public void update (Observable o, Object arg) {
        boolean b = ((Boolean)arg).booleanValue();
        if (b == false)
            messagePane.setMessage("");
    }
});

// On selection change events, update the message on the status bar indicating
// the number of selected elements
```

Easy-to-Manage Technology

The JMap API makes it possible to develop downloadable applications that require no installation or upgrades at the user end. Thus JMap substantially reduces maintenance labor and costs. Yet JMap can be used to develop not only light applications (Java applets) that can be downloaded in seconds, but also, to meet specific needs, standalone (Java) applications that can be installed client side.

In addition to its simple, well-documented Java API, JMap incorporates an administration module. This system administrator makes it easy to set up and maintain geodatabases by providing options for geometric and descriptive data management, user management, assisted SQL search creation, etc.



Built-in Functions

- *PAN, ZOOM IN AND OUT*
- *SPATIAL OBJECT QUERY*
- *OBJECT LABELING AND MOUSEOVER*
- *SPATIAL OBJECT SELECTION*
- *THEMATIC MAPS*
- *URL LINKS*
- *DYNAMIC DATA / VEHICULE TRACKING*
- *REDLINING AND EMAIL*
- *DESCRIPTIVE SEARCHES (SQL)*
- *RASTER IMAGE DISPLAY*
- *DOCUMENT LINKS (PHOTOS, ETC.)*
- *MAP AND REPORT PRINTING*
- *DISTANCE MEASUREMENT*
- *...*

New features coming in version 2 (June 2001)

- *FULL WEB-BASED REMOTE ADMINISTRATION*
- *ADDRESS MATCHER*
- *RASTER MAP IMAGE CREATION*
- *DATA CACHING ON THE CLIENT*
- *DRAWING AND EDITING TOOLS*
- *ORACLE SPATIAL INTEGRATION*
- *SUPPORT FOR JAVA 2 ON THE CLIENT*
- *SESSION SAVES AND RELOADS*
- *VARIABLE SYMBOLOGY*
- *EXTENSIVE USE OF JSP*